

# PRODUCT CATALOG

ISSUE 05/2017



Forestry

# CONTENT



<b>Tools for Wood Chippers.....</b>	<b>4</b>	<b>Tools for Forestry Mulchers .....</b>	<b>36</b>
For Albach.....	6	For AHWI.....	38
For Bandit®.....	8	For ASV/Terex .....	42
For Bruks.....	10	For Berti.....	44
For Doppstadt.....	12	For Bobcat .....	46
For Eschlböck .....	14	For Bradco / Magnum.....	48
For Heizohack .....	16	For FAE .....	50
For Jenz.....	20	For Fecon .....	64
For Morbark.....	26	For Gyro-Trac / DENIS CIMAF.....	68
For Mus-Max.....	28	For John Deere .....	70
For Starchl.....	30	For Loftness .....	72
For Vermeer .....	32	For Plaisance.....	74
For Wüst.....	34	For Rayco .....	76
		For Seppi.....	78
		For TMC Cancela .....	82
		For Willibald.....	86



**Tools for Stump Cutters ..... 88**

For Bandit®..... 90

For Laski ..... 92

For Rayco / FSI / Carlton / Vermeer ..... 94

For Ufkes Greentec.....102

**About KingKong-Tools..... 110**

KingKong-Tools Fan Corner..... 110

Manufacturing Processes ..... 112

Company Profile ..... 114

Team..... 116



# TOOLS FOR WOOD CHIPPERS





# CONTENT

For Albach.....	6
For Bandit ®.....	8
For Bruks .....	10
For Doppstadt.....	12
For Eschlböck.....	14
For Heizohack .....	16
For Jenz.....	20
For Morbark.....	26
For Mus-Max.....	28
For Starchl .....	30
For Vermeer.....	32
For Wüst.....	34



# KING KONG TOOLS FOR WOOD CHIPPERS

FOR ALBACH

## KFM009



All-purpose chipper knife fitting Albach wood chippers

Wear resistant chipper steel, heat-treated, cutting edge sharpened

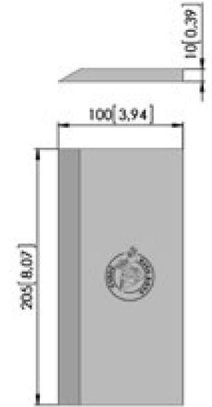
Dimensions:

- 205x100x10 mm

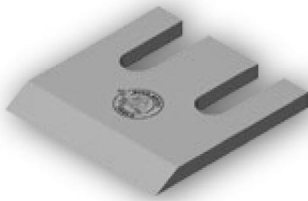
weight per piece  
2.97 lbs (1.35 kg)



Fits on Albach Silvator wood chippers



## KFM020



All-purpose chipper knife fitting Albach wood chippers

Wear resistant chipper steel, heat-treated, cutting edge sharpened

Dimensions:

- 200x205x18 mm

weight per piece  
9.90 lbs (4.50 kg)



## KFM073



All-purpose chipper knife fitting Albach wood chippers

Wear resistant chipper steel, heat-treated, cutting edge sharpened

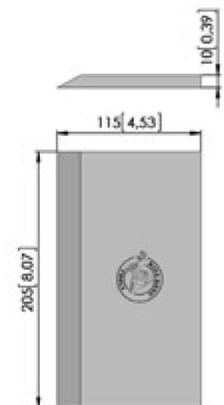
Dimensions:

- 205x115x10 mm
- cutting angle 28°

weight per piece  
3.74 lbs (1.70 kg)

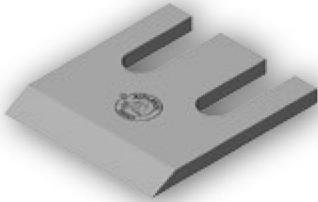


Fits on Albach Diamant wood chippers





## KFM079



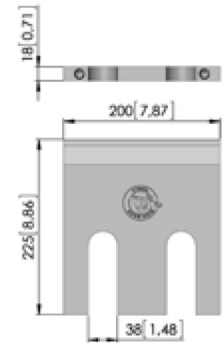
All-purpose chipper knife fitting Albach wood chippers  
 Wear resistant chipper steel, heat-treated, cutting edge sharpened with double sharpening

Dimensions:  
 ■ 200x225x18 mm  
 ■ cutting angles 30°/28°

weight per piece  
 10.43 lbs (4.74 kg)

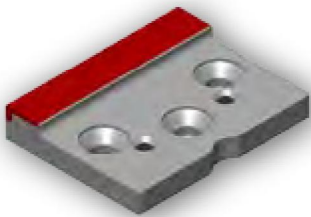


Fits on Albach Diamant wood chippers



FOR ALBACH

## KFS1187



Carbide tipped cutting blade fitting Albach wood chippers

Blade with solid tungsten carbide wear protection (11 carbide tips) for extended tool life

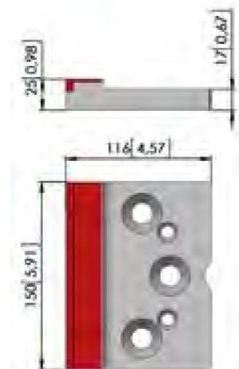
Severe duty version

weight per piece  
 5.54 lbs (2.52 kg)

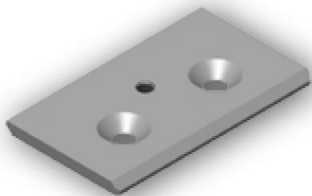


Compatible parts:  
 ■ used with KFS1195

Fits on Albach Diamant wood chippers



## KFS1195



Cover plate fitting Albach wood chippers

Made out of wear and break resistant HARDOX steel

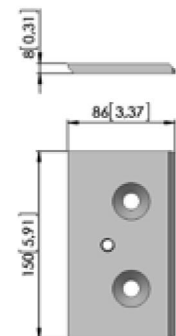
Severe duty version

weight per piece  
 1.58 lbs (0.72 kg)



Compatible parts:  
 ■ used with KFS1187

Fits on Albach Diamant wood chippers





# KING KONG TOOLS FOR WOOD CHIPPERS

FOR BANDIT®



## KFM086

All-purpose chipper knife fitting Bandit®, Rayco and Vermeer wood chippers

Wear resistant chipper steel, heat-treated, both cutting edges sharpened

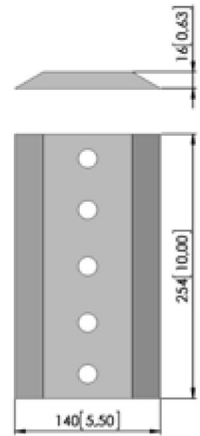
Reversible version with 5 mounting holes

weight per piece  
7.48 lbs (3.40 kg)



Fits on the following chipper models:

- Bandit® 1590, Bandit® 1890 Intimidator, Bandit® 2090
- Rayco RC12, RC20XP
- Vermeer 1800, 2000





# KING KONG TOOLS FOR WOOD CHIPPERS

FOR BRUKS

## KFM051



All-purpose chipper knife fitting BRUKS wood chippers

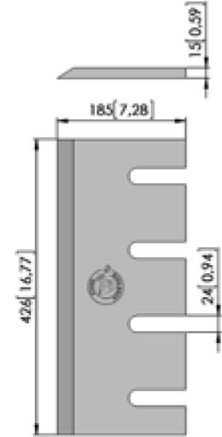
Wear resistant chipper steel, heat-treated, cutting edge sharpened

Version with two M10 fine threads for adjusting screws

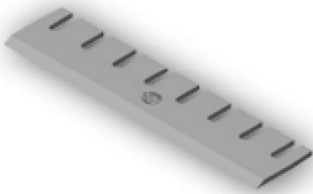
Dimensions:

- 426x185x16 mm

weight per piece  
16.50 lbs (7.50 kg)



## KFM083



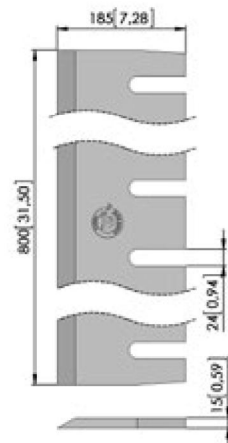
All-purpose chipper knife fitting BRUKS wood chippers

Wear resistant chipper steel, heat-treated, cutting edge sharpened

Dimensions:

- 800x185x16 mm

weight per piece  
31.24 lbs (14.20 kg)

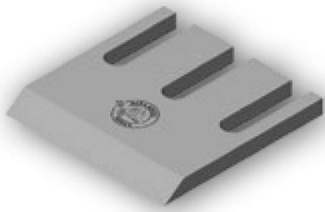






# KING KONG TOOLS FOR WOOD CHIPPERS

FOR DOPPSTADT



## KFM010

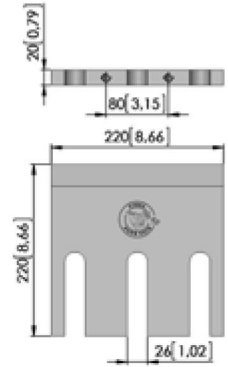
All-purpose chipper knife fitting Doppstadt wood chippers

Wear resistant chipper steel, heat-treated, cutting edge sharpened

Dimensions:

■ 220x220x20 mm

weight per piece  
12.32 lbs (5,60 kg)





FOR DOPPSTADT



# KING KONG TOOLS FOR WOOD CHIPPERS

FOR ESCHLBÖCK



## KFM034

All-purpose chipper knife fitting Eschlböck wood chippers

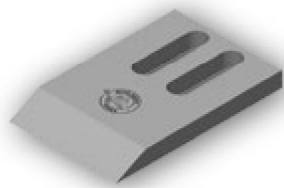
Wear resistant chipper steel, heat-treated, cutting edge sharpened

Dimensions: 230x140x18 mm

Fits on the following Eschlböck models:

- BIBER 7
- BIBER 8
- BIBER 70
- BIBER 80

weight per piece  
7.92 lbs (3.60 kg)



## KFM016-2

All-purpose chipper knife fitting Eschlböck wood chippers

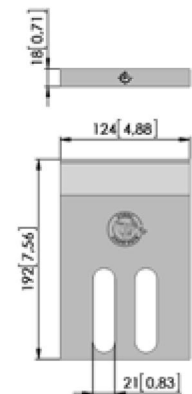
Wear resistant chipper steel, heat-treated, cutting edge sharpened

Dimensions: 124x192x18 mm

Fits on the following Eschlböck models:

- BIBER 82
- BIBER 83
- BIBER 84
- BIBER 92

weight per piece  
5.63 lbs (2.56 kg)



## KFM041

All-purpose chipper knife fitting Eschlböck wood chippers

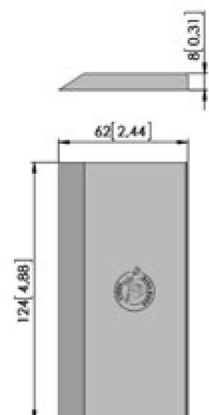
Wear resistant chipper steel, heat-treated, cutting edge sharpened

Dimensions: 124x62x8 mm

Fits on the following Eschlböck models:

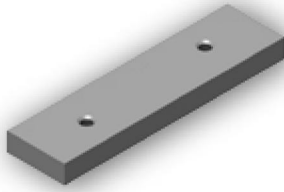
- BIBER 82
- BIBER 83
- BIBER 84
- BIBER 92

weight per piece  
0.92 lbs (0.42 kg)





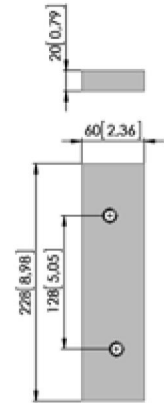
## KFM054



weight per piece  
4.62 lbs (2.10 kg)

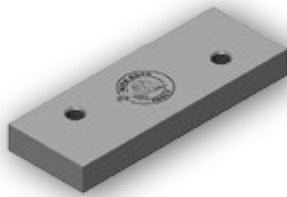
Counterblow bar fitting Eschlböck wood chippers  
Made out of wear resistant steel for a long tool life  
Reversible version

- Dimensions:
- 228x60x20 mm
  - Two mounting holes



FOR ESCHLBÖCK

## KFM087



weight per piece  
7.26 lbs (3.30 kg)

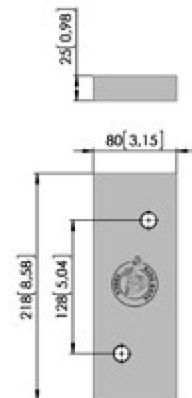


Counterblow bar fitting Eschlböck wood chippers  
Made out of wear resistant steel for a long tool life  
Reversible version

- Dimensions:
- 218x80x25 mm
  - Two mounting holes

Fits on the following Eschlböck models:

- BIBER 92



# KING KONG TOOLS FOR WOOD CHIPPERS

FOR HEIZOHACK

## KFM007



All-purpose replacement blade fitting Heizohack wood chippers

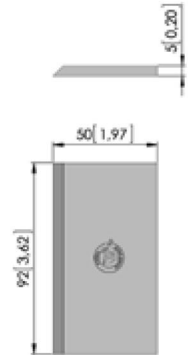
Wear resistant chipper steel, heat-treated, cutting edge sharpened

Standard version

weight per piece  
0.35 lbs (0.16 kg)



- Dimensions:
- 92x50x5 mm
  - cutting angle: 45°



## KFM080



All-purpose replacement blade fitting Heizohack wood chippers

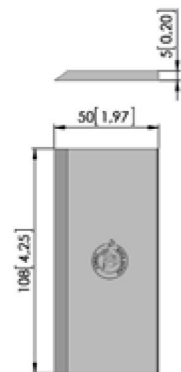
Wear resistant chipper steel, heat-treated, cutting edge sharpened

Special version

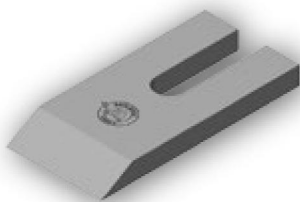
weight per piece  
0.44 lbs (0.20 kg)



- Dimensions:
- 108x50x5 mm
  - cutting angle: 40°



## HEIZOHACK

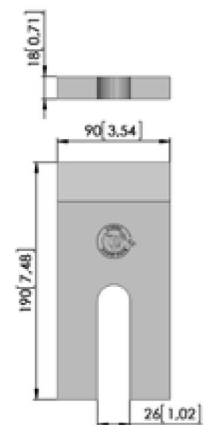


All-purpose chipper knife fitting Heizohack wood chippers

Wear resistant chipper steel, heat-treated, cutting edge sharpened

- Dimensions:
- 190x90x18 mm

weight per piece  
4.11 lbs (1.87 kg)







## KFM018



Clamping wedge of the tool holder system fitting Heizohack wood chippers

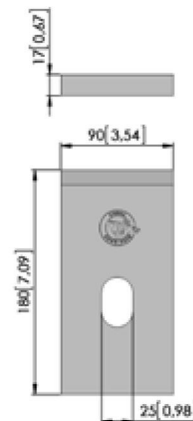
Made out of wear and break resistant HARDOX steel

Severe duty version

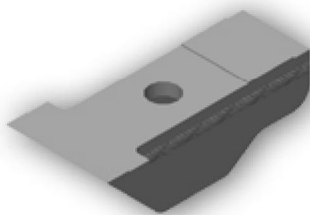
Compatible parts:

- KFM007
- KFM019

weight per piece  
3.30 lbs (1.50 kg)



## KFM019



Tool holder fitting Heizohack wood chippers

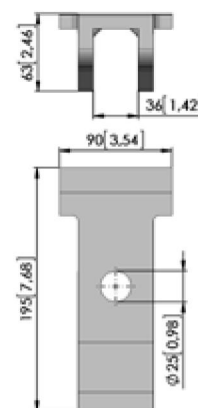
Made out of wear resistant steel

Standard version

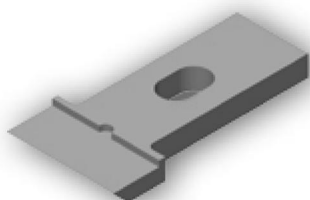
Compatible parts:

- KFM007
- KFM018

weight per piece  
5.02 lbs (2.28 kg)



## KFM059



T-Holder fitting Heizohack wood chippers

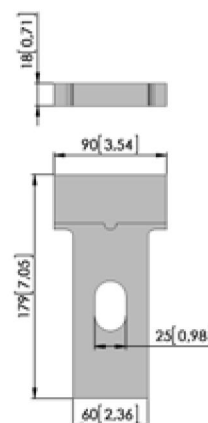
Made out of wear and break resistant HARDOX steel

Severe duty version

Compatible parts:

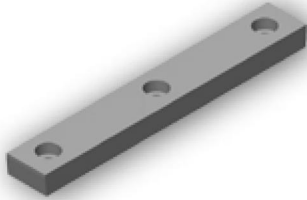
- KFM007
- KFM019

weight per piece  
3.06 lbs (1.39 kg)



# KING KONG TOOLS FOR WOOD CHIPPERS

FOR HEIZOHACK

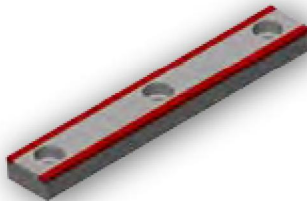
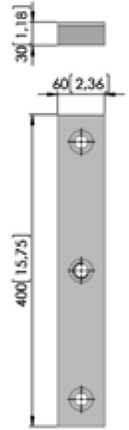


## KFM045

Counterblow bar fitting Heizohack wood chippers  
Made out of wear resistant steel for a long tool life  
Reversible version

- Dimensions:
- 400x60x30 mm
  - Three mounting holes (M16)

weight per piece  
11.48 lbs (5.22 kg)

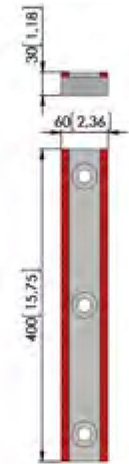


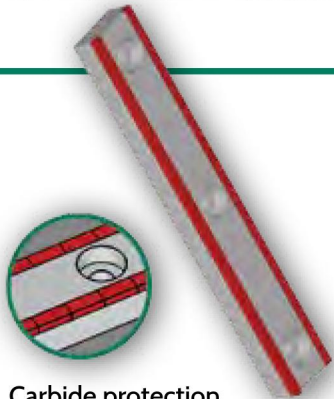
## KFS624

Carbide tipped counterblow bar fitting Heizohack wood chippers  
Extended tool life due to carbide wear protection  
Reversible version

- Dimensions:
- 400x60x30 mm
  - Three mounting holes (M16)

weight per piece  
12.25 lbs (5.57 kg)





Carbide protection  
in detail



## Work smart

Wear protection by KingKong-Tools

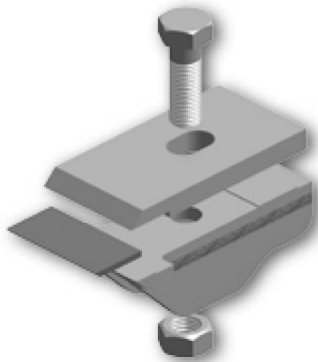
Benefit from our unique carbide tipped counterblow bars for Heizohack wood chippers and extend the tool change intervals on your machine.

Your advantages with carbide tipped counterblow bars in detail:

- unrivaled tool life due to solid tungsten carbide wear protection
- less maintenance work and operating costs on your wood chipper
- carbide wear protection on both sides
- high quality standards during the manufacturing process guarantee consistently good products



## Work smart



Benefit from constant and high quality and reliability with the complete holder system from King Kong Tools for Heizohack wood chippers consisting of tool holder, clamping wedge and replacement blade.

Your advantages with the KingKong-Tools holder system:

- Handpicked steel qualities for longer tool life:  
perfect combination of durability and hardness
- extremely accurate machining and finishing of the cutting edge
- aggressive cutting angle for maximum output
- all standard parts in stock and short-term available

# KING KONG TOOLS FOR WOOD CHIPPERS

FOR JENZ

## JENZ-7-60



All-purpose replacement blade fitting Jenz wood chippers of the HEM series

Wear resistant chipper steel, heat-treated, cutting edge sharpened

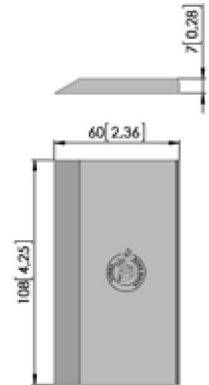
Standard version

weight per piece  
0.75 lbs (0.34 kg)

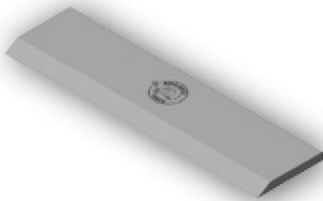


Dimensions:

- 108x60x7 mm
- cutting angle: 30°



## KFM119



All-purpose duplex replacement blade fitting Jenz wood chippers of the HEM series

Wear resistant chipper steel, heat-treated, cutting edge sharpened

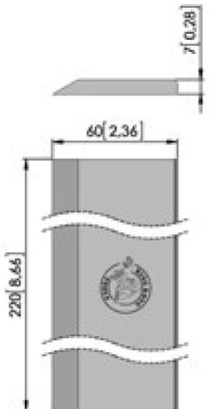
Severe duty version

weight per piece  
1.41 lbs (0.64 kg)



Dimensions:

- 220x60x7 mm
- cutting angle: 30°



## KFM080



All-purpose replacement blade fitting Jenz wood chippers

Wear resistant chipper steel, heat-treated, cutting edge sharpened

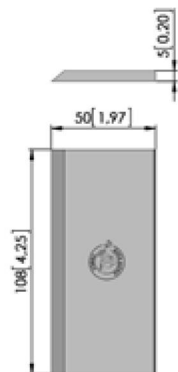
Special version

weight per piece  
0.44 lbs (0.20 kg)



Dimensions:

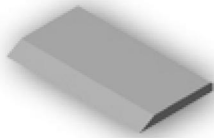
- 108x50x5 mm
- cutting angle: 40°







## KFM072



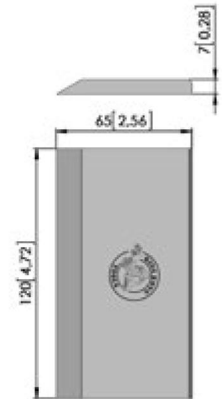
All-purpose replacement blade fitting Jenz wood chipper trucks

Wear resistant chipper steel, heat-treated, cutting edge sharpened

Standard version

Dimensions:

- 120x65x7 mm
- cutting angle: 30°



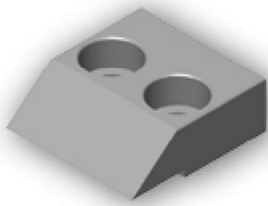
weight per piece  
0.84 lbs (0.38 kg)



50

FOR JENZ

## KFM023



Clamping block of the tool holder system fitting on Jenz wood chippers of the HEM series

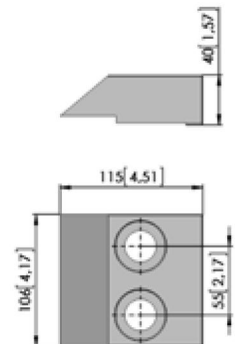
Made out of wear and break resistant steel

Compatible parts:

- KFM024
- JENZ/7/60

Dimensions:

- 106x115x40 mm

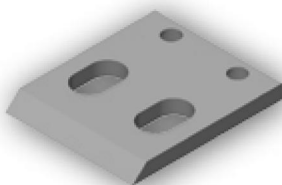


weight per piece  
4.99 lbs (2.27 kg)



5

## KFM024



Clamping disk of the tool holder system fitting on Jenz wood chippers of the HEM series

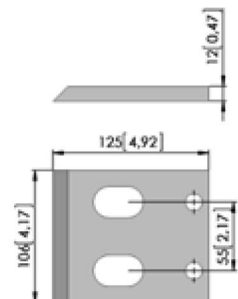
Made out of wear and break resistant steel

Compatible parts:

- KFM023
- JENZ/7/60

Dimensions:

- 106x125x12 mm



weight per piece  
2.13 lbs (0.97 kg)

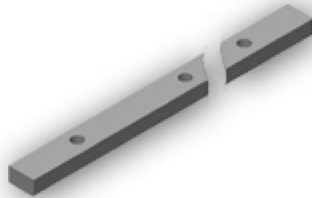


10



# KING KONG TOOLS FOR WOOD CHIPPERS

FOR JENZ



## KFM058

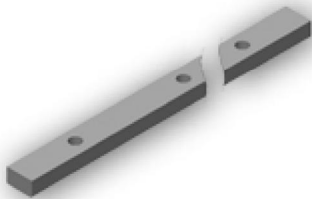
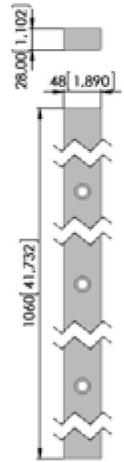
Counter knife fitting Jenz wood chippers

Made out of wear and break resistant chipper knife steel

Dimensions:

- 1060x48x28 mm
- with 5 mounting holes

weight per piece  
24.51 lbs (11.14 kg)



## KFM061

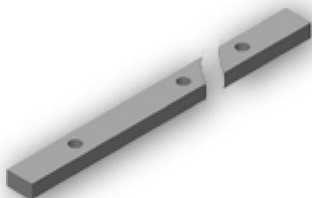
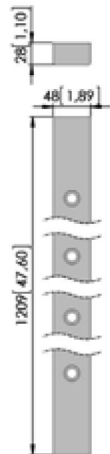
Counter knife fitting Jenz wood chippers

Made out of wear and break resistant chipper knife steel

Dimensions:

- 1209x48x28 mm
- with 6 mounting holes

weight per piece  
27.50 lbs (12.50 kg)



## KFM060

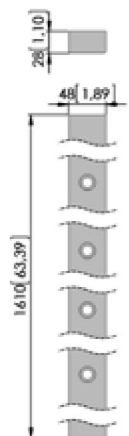
Counter knife fitting Jenz wood chippers

Made out of wear and break resistant chipper knife steel

Dimensions:

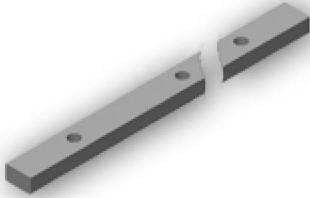
- 1610x48x28 mm
- with 8 mounting holes

weight per piece  
35.20 lbs (16.00 kg)





## KFM063



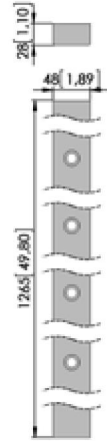
Counter knife fitting Jenz wood chippers

Made out of wear and break resistant chipper knife steel

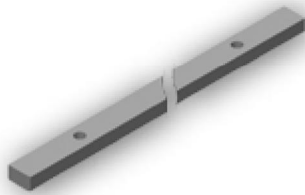
Dimensions:

- 1265x48x28 mm
- with 6 mounting holes

weight per piece  
29.70 lbs (13.50 kg)



## KFM068



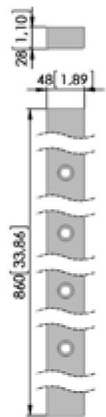
Counter knife fitting Jenz wood chippers

Made out of wear and break resistant chipper knife steel

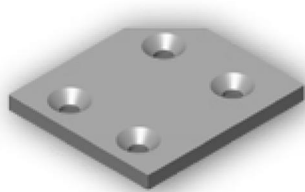
Dimensions:

- 860x40x28 mm
- with 4 mounting holes

weight per piece  
19.47 lbs (8.85 kg)



## KFM064



Blower shovel fitting Jenz wood chippers

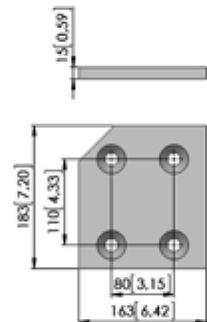
Made out of wear and break resistant chipper knife steel

Dimensions:

- 163x138x15 mm

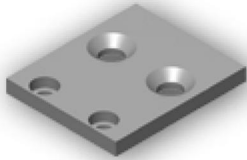
Compatible hardware  
KSI139 (see page 93)

weight per piece  
6.91 lbs (3.14 kg)



# KING KONG TOOLS FOR WOOD CHIPPERS

FOR JENZ



## KFM065

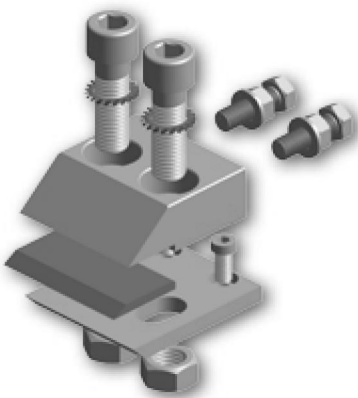
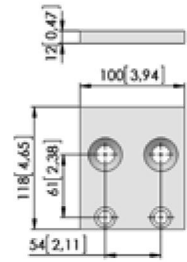
Rotor protection blade fitting Jenz wood chippers

Made out of extremely wear resistant HARDOX steel

Dimensions:

- 118x100x12 mm
- built for 108 mm rotors

weight per piece  
2.29 lbs (1.04 kg)



## Work smart

Benefit from constant high quality and reliability with the complete holder system from King Kong Tools for Jenz wood chippers of the HEM series.

Your advantages with the KingKong-Tools holder system:

- Handpicked steel qualities for longer tool life:  
perfect combination of durability and hardness
- extremely accurate machining and finishing of the cutting edge
- aggressive cutting angle for maximum output
- all standard parts in stock and short-term available



**HARDWARE**

	<p><b>KSI121</b> Bolt M24x75-10.9 DIN912</p>	<p>weight per piece 0.77 lbs (0.35 kg)</p> <p></p>
	<p><b>KSI122</b> Bolt M16x50 8.8 DIN933</p>	<p>weight per piece 0.22 lbs (0.10 kg)</p> <p></p>
	<p><b>KSI127</b> Adjusting bolt M12x25 8.8 DIN7984</p>	<p>weight per piece 0.09 lbs (0.04 kg)</p> <p></p>
	<p><b>KSI123</b> Nut M16 8.8 DIN934</p>	<p>weight per piece 0.02 lbs (0.01 kg)</p> <p></p>
	<p><b>KSI124</b> Nut M24 10.9 DIN934</p>	<p>weight per piece 0.18 lbs (0.08 kg)</p> <p></p>
	<p><b>KSI125</b> Knurled washer M24 DIN6798A</p>	<p>weight per piece 0.02 lbs (0.01 kg)</p> <p></p>
	<p><b>KSI108</b> Washer M24 Schnorr washer</p>	<p>weight per piece 0.04 lbs (0.02 kg)</p> <p></p>
	<p><b>KSI126</b> Washer M16 DIN126</p>	<p>weight per piece 0.09 lbs (0.04 kg)</p> <p></p>
	<p><b>KSI136</b> Bolt M24x120-10.9 DIN912</p>	<p>weight per piece 1.10 lbs (0.50 kg)</p> <p></p>
	<p><b>KSI138</b> Bolt M12x40 V4A DIN912</p>	<p>weight per piece 0.09 lbs (0.04 kg)</p> <p></p>
	<p><b>KSI139</b> Bolt M16x50 DIN7991 10.9</p>	<p>weight per piece 0.24 lbs (0.11 kg)</p> <p></p>

FOR JENZ

# KING KONG TOOLS FOR WOOD CHIPPERS

FOR MORBARK



## KFM085

All-purpose chipper knife fitting Morbark wood chippers

Wear resistant chipper steel, heat-treated, both cutting edges sharpened

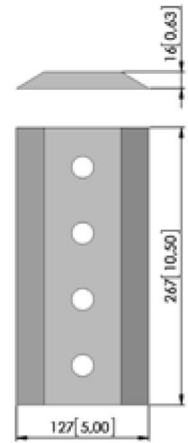
Reversible version with 4 mounting holes

weight per piece  
6.97 lbs (3.17 kg)



Fits on the following Morbark chipper models:

Beever M18R, M6R, M8D, M12R, M12D, 12, M14R, M15R, M20R, 10, 13, 17, 20/20, 20/36, 30/36, 50/36, 50/48, 2050, 2060, 2070, 2200, 2400







# KING KONG TOOLS FOR WOOD CHIPPERS

FOR MUS-MAX



## KFM003

All-purpose chipper knife fitting Mus-Max wood chippers

Wear resistant chipper steel, heat-treated, cutting edge sharpened with double sharpening

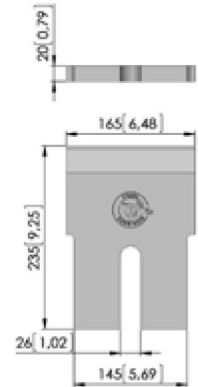
Dimensions:

- 164,5 x 235 x 20 mm
- cutting angles 35°/29°

Fits on the following Mus-Max models:

- WT 9      ■ WT 8 XL      ■ WT 10 XL
- WT 10    ■ WT 9 XL      ■ WT 11 XL

weight per piece  
10.47 lbs (4.76 kg)



## KFM004

All-purpose chipper knife fitting Mus-Max wood chippers

Wear resistant chipper steel, heat-treated, cutting edge sharpened with double sharpening

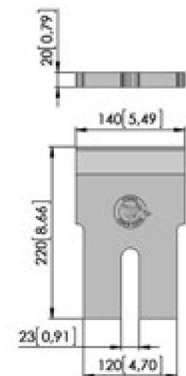
Dimensions:

- 140 x 220 x 20 mm
- cutting angles 35° / 29°

Fits on the following Mus-Max models:

- WT 7
- WT 8

weight per piece  
8.14 lbs (3.70 kg)



## KFM031

All-purpose chipper knife fitting Mus-Max wood chippers

Wear resistant chipper steel, heat-treated, cutting edge sharpened with double sharpening

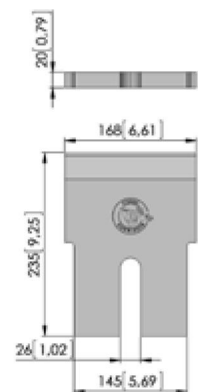
Dimensions:

- 168 x 235 x 20 mm
- cutting angles: 34° / 30°

Fits on the following Mus-Max models:

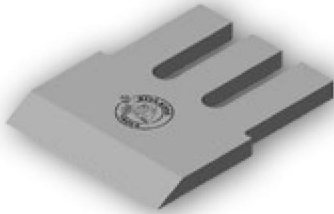
- WT 10
- WT 11

weight per piece  
10.67 lbs (4.85 kg)





## KFM077



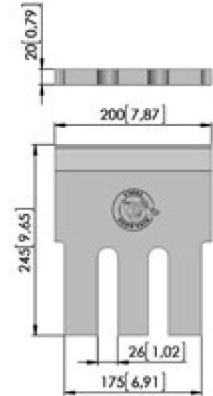
All-purpose chipper knife fitting Mus-Max wood chippers

Wear resistant chipper steel, heat-treated, cutting edge sharpened with double sharpening

Dimensions:

- 200 x 245 x 20 mm
- cutting angles 34°/30°

weight per piece  
12.78 lbs (5.81 kg)



## KFM078



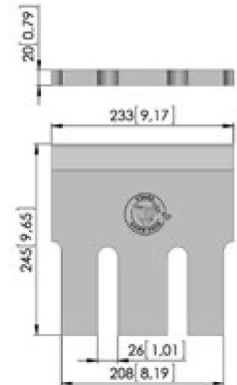
All-purpose chipper knife fitting Mus-Max wood chippers

Wear resistant chipper steel, heat-treated, cutting edge sharpened with double sharpening

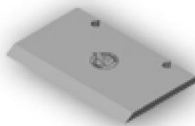
Dimensions:

- 233 x 245 x 20 mm
- cutting angles 34°/30°

weight per piece  
15.40 lbs (7.00 kg)



## KFM052



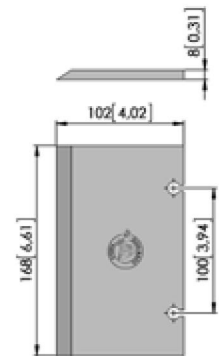
All-purpose replacement blade fitting Mus-Max wood chippers

Wear resistant chipper steel, heat-treated, cutting edge sharpened

Dimensions:

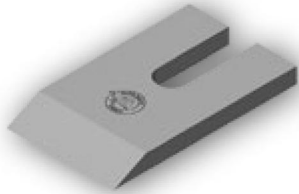
- 168 x 102 x 8 mm
- cutting angle: 33°

weight per piece  
2.18 lbs (0.99 kg)



# KING KONG TOOLS FOR WOOD CHIPPERS

FOR STARCHL



## KFM036

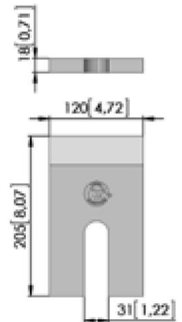
All-purpose chipper knife fitting Starchl wood chippers

Wear resistant chipper steel, heat-treated, cutting edge sharpened

Dimensions:

- 120 x 205 x 18 mm
- cutting angle 26°

weight per piece  
6.16 lbs (2.80 kg)



## KFM037

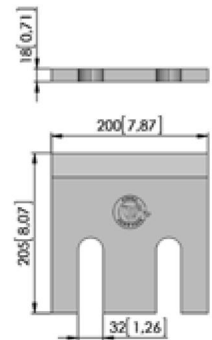
All-purpose chipper knife fitting Starchl wood chippers

Wear resistant chipper steel, heat-treated, cutting edge sharpened

Dimensions:

- 200 x 205 x 18 mm
- cutting angle 30°

weight per piece  
9.90 lbs (4.50 kg)







# KING KONG TOOLS FOR WOOD CHIPPERS

FOR VERMEER



## KFM084

All-purpose chipper knife fitting Vermeer wood chippers

Wear resistant chipper steel, heat-treated, both cutting edges sharpened

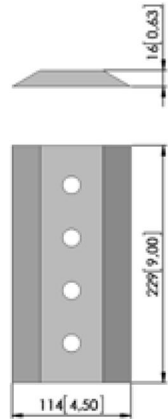
Reversible version with 4 mounting holes

weight per piece  
4.82 lbs (2.19 kg)



Fits on the following chipper models:

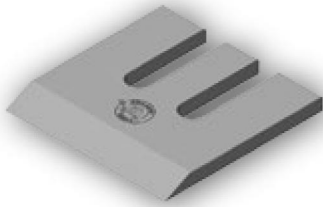
- Vermeer BC1000XL
- Vermeer BC1200XL
- Asplundh/Altec CFD1217





# KING KONG TOOLS FOR WOOD CHIPPERS

FOR WÜST



## KFM038

All-purpose chipper knife fitting Wüst wood chippers

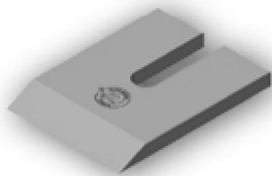
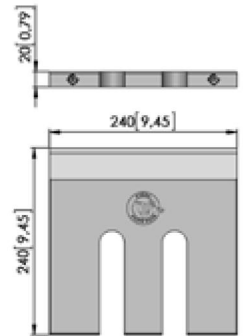
Wear resistant chipper steel, heat-treated, cutting edge sharpened with double sharpening (26° / 28°)

Dimensions: 240 x 240 x 20 mm

Fits on the following Wüst models:

- KPC-12
- SC-796
- THS-HD 710
- THS-HD 712
- HD 810

weight per piece  
13.20 lbs (6.00 kg)



## KFM039

All-purpose chipper knife fitting Wüst wood chippers

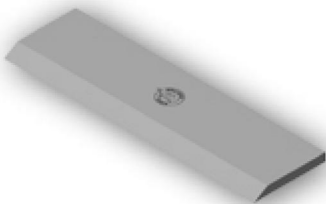
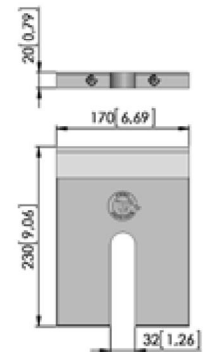
Wear resistant chipper steel, heat-treated, cutting edge sharpened with double sharpening (26° / 28°)

Dimensions: 230 x 170 x 20 mm

Fits on the following Wüst models:

- BBHK-85
- BBHK-100

weight per piece  
12.10 lbs (5.50 kg)



## KFM050

All-purpose replacement blade fitting Wüst wood chippers

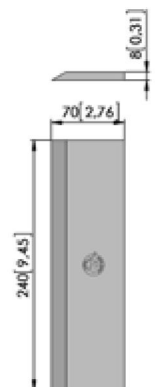
Wear resistant chipper steel, heat-treated, cutting edge sharpened

Wider version: 240 x 70 x 8 mm

Fits on the following Wüst models:

- KPC-12
- SC-796
- THS-HD 710
- THS-HD 712
- HD 810

weight per piece  
2.16 lbs (0.98 kg)





## KFM070



All-purpose replacement blade fitting Wüst wood chippers

Wear resistant chipper steel, heat-treated, cutting edge sharpened

Standard version: 170 x 70 x 8 mm

Fits on the following Wüst models:

- BBHK-85
- BBHK-100

weight per piece  
1.50 lbs (0.68 kg)

